



COLLABORATION - CONNECTIVITY – INDEPENDENCE – INNOVATION – QUESTIONING – REFLECTION - RESILIENCE

Dear parents and carers,



This week we focussed much of our learning around the story of 'The Night Gardener' which generated all sorts of discussions about what makes our school and the village in which we live communities of kindness. Throughout the week children completed acts of kindness for others including parents, local services (butchers, the shop and the surgery) which have or will receive a gift shortly. At playtimes the teachers gave up their time to go and play with the children which included an outside 'bop' to music!! Throughout the week the children completed small acts of kindness to each other and completed a challenge sheet.

In Year 3 and 4 they delved a little deeper into what kindness is and means with the question that they generated - 'Is everyone able to be kind?' This led to discussions about choice and whether it is possible to be too kind...they also asked whether adults are kinder than children? It was great to hear them articulate their ideas and listen respectfully to others as they shared their thoughts.

We hope the children extend their acts of kindness into the half term and if they impress you, please reward them with some dojos when they return!



When we return to school it is the start of Fairtrade Fortnight and the RRS ambassadors have been planning all sorts of events to raise awareness of the principles behind 'fairtrade' - more information to follow. I can tell you that an inter class bake off has been organised and some of our teachers are getting quite competitive!

### Parents and Friends

The Easter Bingo is back after half term and promises to be a great evening out. Please see the flyer with this newsletter. In readiness, we will be putting a basket in reception for raffle prize donations.

### Friday Fine Dining!

Congratulations to Amara and Iris (Explorers) Bertie (Adventurers), Rupert and Noah (Voyagers), Lily (Navigators) and Harry (Pioneers) who were selected to bring a friend to 'Friday Dining' today. They were chosen by their class teacher for displaying the qualities of our Jigsaw learning this week and for their excellent manners.



### Pre-Loved Sale

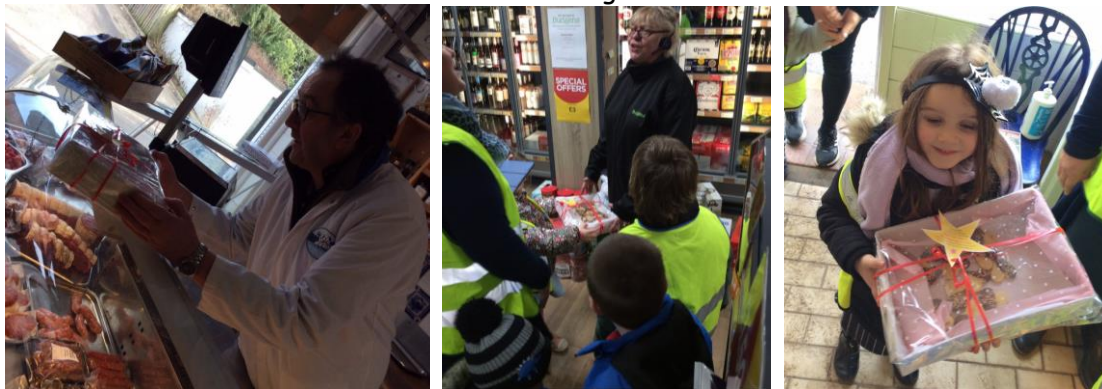
The Friends and Parents committee are organising a big 'Pre-Loved' second-hand sale in Sixpenny Village Hall on Saturday 18th March. So please hold onto any clothes, books (especially kids books), and toys so these can be donated to the sale. We will be taking collections of donations from Wednesday 15th March at the school.

### Support for families experiencing hardship

Food vouchers for pupil premium children should arrive with families tomorrow. Due to demand there has been some delay in processing them. You can also apply for additional support for your child by following this link: <https://www.dorsetcouncil.gov.uk/w/pupil-premium>

### A snapshot of learning for this week:

**Explorers** have been busy baking for their acts of kindness as well enjoying the Night gardener story and a special story time treat from the reading ambassadors. Today they went for a walk with some of the older children to deliver their gifts!



**Adventurers** have been finding out about who lives in our soil and have really enjoyed finding out about fascinating earthworms in the book 'A Worm called Wallace'.

**Voyagers** have been learning how to tell the time in maths in year 2, using and matching ordinal numbers in year 1, applying watercolours in response to artwork by Frances Hatch and of course they made flapjacks for the parents as well as cards as acts of kindness.

**Navigators and Pioneers** have been comparing and contrasting two different illustrations and describing how they make the reader feel and how they show change. They have also been making predictions based on vocabulary and front cover illustration. In history, they have been exploring how ancient civilizations traded, and set up their own street market where the children learnt and practised their bartering skills. In science they explored how the 3 different rock types form.

### Upcoming Dates (all dates on website on the google calendar)

Monday 13<sup>th</sup> February HALF TERM  
Monday 20<sup>th</sup> February INSET DAY (School and Nursery closed)  
Tuesday 21<sup>st</sup> February **Back to school**  
  
Thursday 23<sup>rd</sup> February Y2 Dodgeball tournament (team TBC)  
Start of Fairtrade Fortnight  
Friday 3<sup>rd</sup> March World Book Day - Dress as a book character  
Thursday 16<sup>th</sup> March Mother's day Sale

Saturday 18<sup>th</sup> March Pre-Loved Sale fundraiser at the village hall  
Thursday 30<sup>th</sup> March Easter Bingo at the Village Hall

We wish you and your families a very happy half term and remind you that the school is open again on **Tuesday 21<sup>st</sup> February.**

Kind regards,



Mrs Rachael Musselwhite (Headteacher)